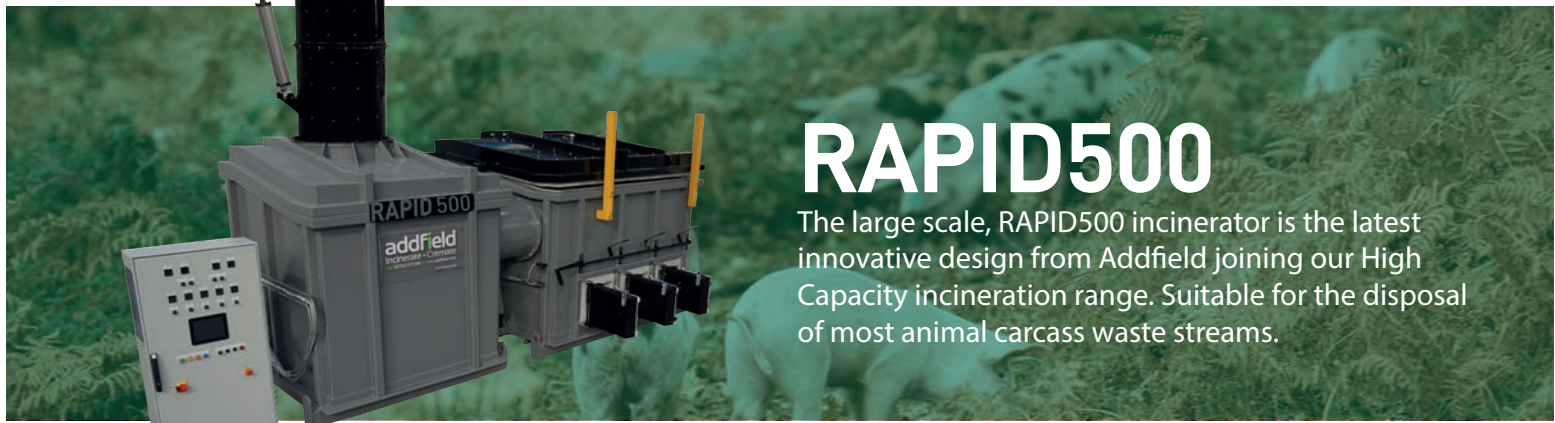


High Capacity



RAPID500

The large scale, RAPID500 incinerator is the latest innovative design from Addfield joining our High Capacity incineration range. Suitable for the disposal of most animal carcass waste streams.



The RAPID™ range of incinerators are the ideal solution for batch load disposal of waste. This innovative system allows the operator to load large elements via the access door. This compact design allows fast deployment of a static or mobile version with a burn rate of up to 500 kg/hr direct to the waste source, helping control site biosecurity.

Built to rapidly handle a wide range of solid waste, able to achieve a burn rate of up to 500kg/hr. A highly robust and thermally efficient solution benefiting from an advanced burn chamber to ensure a smooth and equal burn. Multiple sub chamber doors allow rapid de-ashing during and after the incineration process has been completed.

Machine Specification	
External Length (mm)	7223
External Width (mm)	2511
External Height (mm)	4718
Internal Length (mm)	2470
Internal Width (mm)	1520
Internal Height (mm)	1550
Chamber Volume (m ³)	2.6
Weight (Approx.Tonnes)	16
Nominal Burn Rate	<500
Thermal Capacity (kW)	1200
Power Supply 50/60hz	380-415
Diesel	Yes
LPG	Yes
N-Gas	Yes

*We reserve the right to change the specification, dimensions and quality of materials from time to time, so long as the alteration is minor or an improvement to the said product.

Primary Chamber

- Fully insulated internal refractory lining, constructed from high grade refractory brick ensuring a self-supporting, interlocked arrangement.
- Fully interlocked, manually operated, access door.
- Waste ignition burner, temperature controlled on-off, complete with internal air fans.
- Grated hearth combustion burner, temperature controlled on-off, complete with internal air fans.
- Secondary combustion burner air fans with automatically controlled distribution to their designated area.
- One temperature sensor mounting points.

Secondary Chamber

- Fully insulated internal refractory lining. Constructed from high grade low thermal mass insulation.
- Temperature controlled Secondary chamber burnout burner with automatic on-off control, complete with internal air fans.
- Integrated combustion burner air fans automatically controlling distribution to designated areas.
- Temperature sensor mounting point at the top of the chamber, ensuring the chamber reaches the required 850°C minimum, with a 2 second retention time.

Expected Emissions*	% By Volume
Carbon Dioxide (CO2)	5%
Water (H2O)	29%
Oxygen (O2)	6%
Nitrogen (N2)	54%
Smoke (Not detectable under standard operating conditions)	0%
Odour (Not detectable under standard operating conditions)	0%
Volume of Ash (Dependant on waste streams)	1-3%

*These emissions are based on minimum waste calorific values 45.7MJ/kg (animal carcass). With no other waste streams present, other than general packaging containers that do not make up more than 1.5% of the total load weight.



Addfield Environmental Systems Limited
Unit 9 | Zone 4 | Burntwood Business Park
Staffordshire | WS7 3XD | United Kingdom

© Addfield Environmental Systems Ltd. All information should be used as a guide only, specifications are subject to change without notice.



High Capacity



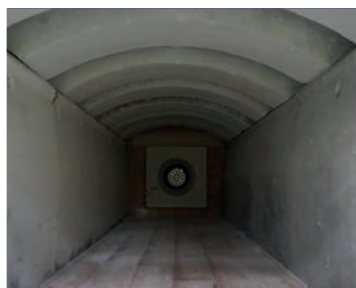
RAPID500

Waste Loading and De-Ashing

Loading can be carried out either mechanically or manually through the vertical opening hydraulically operated lid. The ash removal will be manually through the front ash doors, a full set of de-ashing tools are included with every Rapid machine. To de-ash simply push the de-ashing button on the control panel, this will isolate the lower burners to allow ash doors to open for ash removal.

The Addfield Difference

- Pre-fabricated 8mm robust mild steel casing, seam welded and suitably stiffened/ braced where necessary.
- Lightweight resilient refractory fibre insulation door, providing a tight seal, giving excellent thermal efficiency.
- Primary and secondary chamber lining thickness 184mm, rated at 1650°C.
- Paint finishing – The steel structures are completely painted using a two-pack high grade paint system.
- Unique Grated Hearth technology designed for the increased efficiency of material incineration.
- With a 184mm thick refractory lining, using andalusite and insulation bricks, improving thermal efficiency.



Additional Operation Equipment



Bin Tipper

The Bin Tipper unit empties waste within the bin using a unique electro-hydraulic mechanism that can lift and tip more than 150kg. Hands free loading ensures operators safety, when dealing with hazardous waste.



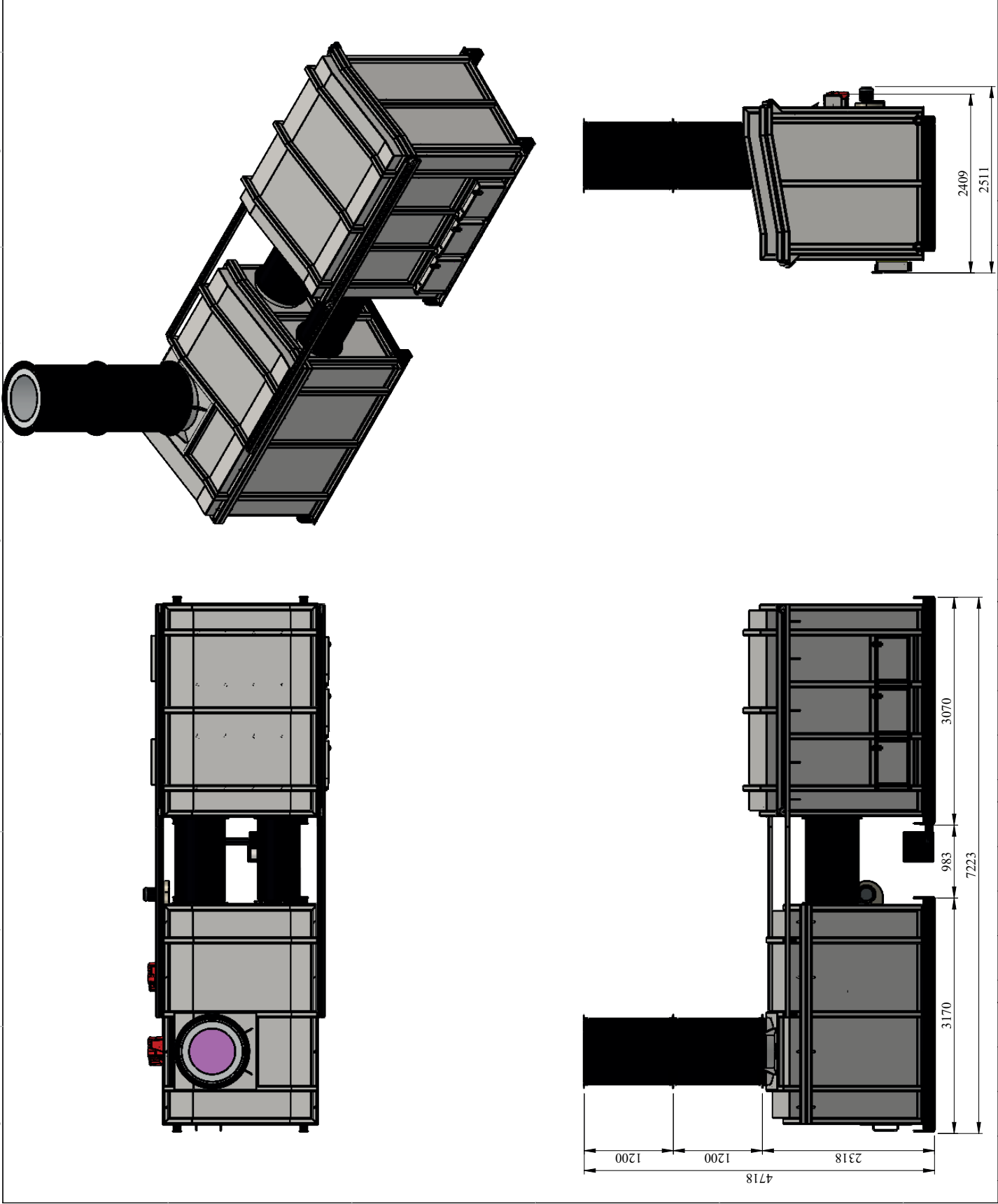
Fuel Tank

Allowing you to operate the incinerator in all locations as well as providing a backup to your traditional supply. Available in 1000 to 5000 litre capacity. Fuel can be safely stored and monitored in close proximity to your incinerator.



Venturi System

The Venturi is an advanced flue gas treatment system designed to further reduce dust, acid gasses, dioxins and furans. Highly effective, the venturi is widely regarded as the leading treatment system in its field.



DATE	DRAWN	CHECKED	APPROVED	DATE	DRAWN	CHECKED	APPROVED	DATE	DRAWN	CHECKED	APPROVED
				18/08/2022							
COMMENTS				COMMENTS				COMMENTS			
ISSUE FOR MANUFACTURE				ISSUE FOR MANUFACTURE				ISSUE FOR MANUFACTURE			

ADDFIELD ENVIRONMENTAL SYSTEMS LTD
 This drawing and any information or data contained herein is the confidential and copyright property of Addfield Environmental Systems Ltd. It is not to be disclosed, copied, loaned or used for any purpose without the written permission of Addfield Environmental Systems.

ADDFIELD ENVIRONMENTAL SYSTEMS LTD
 Unit 19, Zephyr
 Burnwood Business Park
 Staffordshire
 WS7 3XD

PROJECT:
Rapid 500

TITLE:
GA

DRAWING No.
Rapid 500 Sale GA

REVISIONS
 REV -

SHEET 1 OF 1 SCALE: 1:50 A3



WEIGHT: 20085.47 Kg

MATERIAL: N/A
 FINISH: N/A

THIRD ANGLE PROJECTION
 (UNLESS STATED OTHERWISE)

TOLERANCES UNLESS OTHERWISE STATED

FABRICATION	MACHINING	ANGULAR
2 to 30 ± 1	0.5 up to 3 ± 0.05	up to 400 ± 45°
>30 up to 120 ± 2	>3 up to 6 ± 0.05	>400 up to 1000 ± 30°
>120 up to 400 ± 2	>6 up to 30 ± 0.1	>1000 ± 20°
>400 up to 1000 ± 3	>30 up to 30 ± 0.15	
>1000 up to 2000 ± 4	>30 up to 100 ± 0.2	
>2000 up to 4000 ± 6	>400 up to 1000 ± 0.3	
>4000 up to 6000 ± 8	>1000 up to 2000 ± 0.5	
>6000 up to 12000 ± 10	>2000 up to 4000 ± 0.5	
>12000 up to 16000 ± 12		
>16000 up to 20000 ± 14		
>20000 ± 16		