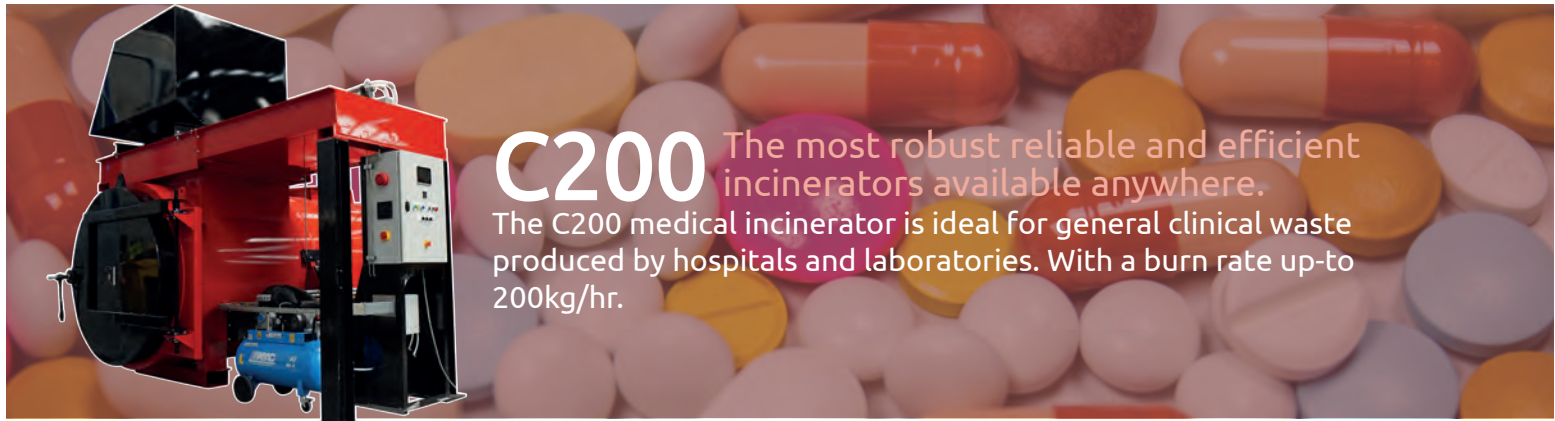


Medical



C200 The most robust reliable and efficient incinerators available anywhere.
 The C200 medical incinerator is ideal for general clinical waste produced by hospitals and laboratories. With a burn rate up-to 200kg/hr.



The C200 is a high capacity clinical incinerator, designed to handle waste such as hazardous, laboratory or pharmaceutical. Having a front-loading design, enabling a safe and easy method for continuous loading of waste.

Biosecurity is a growing concern for hospitals across the globe, the implementation of an Addfield C200 can improve your ability to safely destroy contaminated waste.

The following information details the many features, specifications and optional equipment associated with our C200 incinerator.

Machine Specification	
External L x W x H (mm)	3750 x 4955 x 3800/7400
Internal L x W x H (mm)	3035 x 1353 Ø
Chamber Volume (m ³)	4.35
Weight (approx tonnes)	12
Nominal Burn Rate	<200
Thermal Capacity (kW)	740
Power Supply 50/60 hz (3 Phase)	380v
Door Aperture	1340 Ø
Control Panel	PLC
Fuel Types	Diesel, LPG, N-Gas
Fire Brick (Alumina)	42.5%
Insulation Fire Brick	Grade E23

*We reserve the right to change the specification, dimensions and quality of materials from time to time, so long as the alteration is minor or an improvement to the said product.

Primary Chamber

- Fully insulated internal refractory lining, constructed from high grade refractory brick ensuring a self-supporting, interlocking arrangement.
- Fully interlocked, manually operated, access door.
- Waste ignition burner, temperature controlled on-off, complete with internal air fans.
- Combustion burner, temperature controlled on-off, complete with internal air fans.
- Primary combustion burner air fans with automatically controlled distribution to their designated area.
- One temperature sensor mounting points.

Secondary Chamber

- Fully insulated internal refractory lining, constructed from low thermal mass insulation.
- Secondary chamber burnout burner, temperature controlled on-off, complete with internal air fans.
- Integrated combustion burner air fans with automatically controlled distribution to their designated area.
- All combustion fuel pipework.
- All electrical components.
- One temperature sensor mounting point at the base of the exit flue ensuring the chamber reaches the necessary 1100°C minimum.

Waste Type		
	Clinical Waste	✓
	Treated Waste	✓
	Anatomical Waste	✓
	Cytotoxic & Cytostatic Waste	✓
	Offensive/Hygiene Waste	✓
	Medicinal Waste	✓
	Domestic (municipal) Waste	✓

Medical

C200

The most robust reliable and efficient incinerators available anywhere.

Waste Loading and De-Ashing

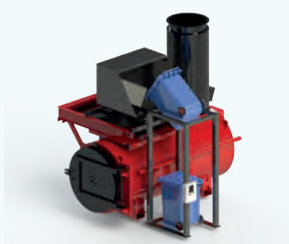
The C200 incinerator is designed for front loading only through the main access door. At the end of every incineration process, ash should be discharged through the loading door into the supplied catcher tray prior to being loaded for the next burn. When de-ashing the machine, make sure that all of the correct PPE is worn, this is to protect yourself from the heat existing the machine.

The Addfield Difference

- Pre-fabricated 8mm & 10mm robust mild steel casing, seam welded and suitably stiffened/ braced where necessary.
- Lightweight resilient refractory fibre insulation door, providing a tight seal, giving excellent thermal efficiency.
- Primary & secondary chamber lining, rated at 1650°C.
- Built in chamber door viewing port for mid cycle and optimised viewing of waste during process.
- Paint finishing – The steel structures are painted using a two-pack high grade paint system.
- With a choice of an AI or PLC Controller, customisable programs can cut your operations times.
- A high quality module refractory lining, using fire bricks and insulation bricks, improving thermal efficiency.



Additional Operation Equipment



Waste Hopper

The optional hopper is perfect for offering a safe and continuous loading of waste equipped with an automatic operated door for loading waste into the centre of the primary chamber.



Bin Tipper

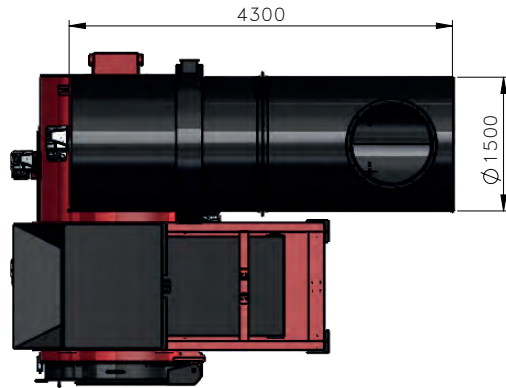
The safest way to load hazardous waste directly into top loading ram loaders. Hands free operation for up to 150kg, compatible with the majority of waste bins. Reliable hydraulically operated mechanism.



Venturi System

An advanced flue gas treatment system designed to further reduce dust, acid gasses, dioxins and furans. Highly effective the venturi is widely regarded as the leading treatment system in its field.

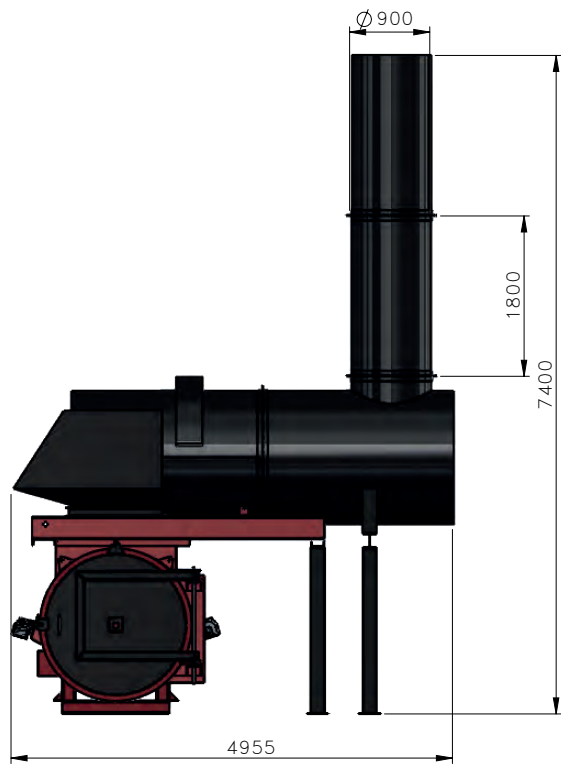
*SHOWN WITH OPTIONAL HOPPER



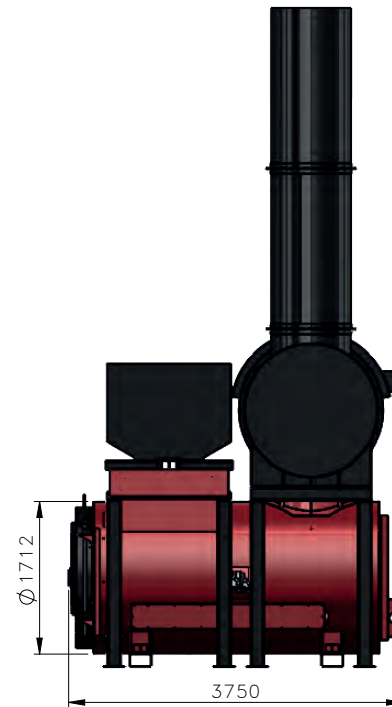
PLAN VIEW



ISOMETRIC VIEW



FRONT VIEW



SIDE VIEW



THIRD ANGLE PROJECTION
(UNLESS STATED OTHERWISE)

MATERIAL:
N/A
FINISH:
N/A

TOLERANCES
(UNLESS STATED OTHERWISE)
WHOLE NUMBERS ±1.00
1 DECIMAL PLACE ±0.10
2 DECIMAL PLACE ±0.05
ANGLES ±0.50°

WEIGHT:

addfield
Incinerate • Cremate

T: +44 (0)1543 571 280
F: +44 (0)1543 571 173
E: sales@addfield.com
www.addfield.com

Addfield Environmental Systems LTD
Unit 9, Zone 4
Burntwood Business Park
Staffordshire
WS7 3XD

DRAWN BY: AS

DATE CREATED: 21/05/2019

PROJECT:

C200 WITH TOP LOADER

TITLE:

C200 WITH TOP LOADER
GA

DATE	DRAWN	CHECKED	APPROVED	DATE	DRAWN	CHECKED	APPROVED	DATE	DRAWN	CHECKED	APPROVED	DATE	DRAWN	CHECKED	APPROVED	DATE	DRAWN	CHECKED	APPROVED				
D	COMMENTS				C	COMMENTS				B	COMMENTS				A	COMMENTS				ADDIED CHIMNEY EXTENSION AND UPDATED DIMENSIONS			

Addfield Environmental Systems LTD (2018)
This drawing and any information or
descriptive material set out on it are the confidential and
copyright property of Addfield Environmental Systems, and
MUST NOT BE DISCLOSED, COPIED, LOANED in whole or part
or used for any purpose without the written permission of
Addfield Environmental Systems.

DRAWING No.
43-001-1

REV
A

SHEET No. 1 OF 1

SCALE: 1:60

A3