

Pet Cremation



**A50-IC (1)** Multi chambered pet cremation machine for small to large pets.  
 Upper and lower cremation chambers increase throughout with easy operation. Cremate up to 15 pets a day.



The A50-IC(1) is designed for managing up to 15 individual pet cremations in a day. Working on a rotating system of cremation. The upper chamber is loaded with the pet for cremation before being transferred into the lower chamber. Constructed with an advanced three-layered refractory. Keeping heat inside the incinerator allowing a more comfortable operation while drastically reducing your operating costs by up to 40%.

Having a simple to use control panel delivering quick access to key functions, electronic fan assisted heat management and Smart technology enables automatic recognition and optimisation between fresh or frozen carcasses ensuring the most efficient operation available.

**Machine Specification**

Upper Chamber L x W x H (mm)	1545 x 728 x 705
Lower Chamber L x W x H (mm)	1545 x 710 x 595
Upper Door Aperture	660 x 620
Lower Door Aperture	400 x 400
Nominal Burn Rate UK* (kg/hr)	<45
Thermal Capacity (kW)	294
Power Supply 50/60 hz (three phase)	380v <small>(single phase 110-120v on request)</small>
Hot Hearth Principle	Yes
Weight (Approx tonnes)	8
Control Panel	PLC
Fuel Types	Diesel, LPG, N-Gas
Insulation Board	25mm Superwool
Insulation Fire Brick	Grade E23
Fire Brick (Alumina)	42.5%

\*We reserve the right to change the specification, dimensions and quality of materials from time to time, so long as the alteration is minor or an improvement to the said product.

**Primary Chamber**

- Heavily insulated internal refractory lining. Constructed from high grade refractory brick ensuring a secure self supporting, interlocking arrangement.
- Manually opening, securely locking, access door with viewing port.
- Automatic temperature controlled on-off waste ignition burner complete with internal air fans.
- Hot Hearth Combustion Burner, temperature controlled on-off, complete with internal air fans.
- Secondary combustion burner air fans, automatically controlled distribution to their designated area.
- Two temperature sensor mounting points.

**Secondary Chamber**

- Fully insulated internal refractory lining. Constructed from high grade refractory brick and low thermal mass insulation.
- Secondary chamber burnout burner, temperature controlled on-off complete with internal air fans
- Automatically controlled integrated combustion burner air fans.
- Temperature sensor mounting point at the base of the exit flue ensuring the chamber reaches the necessary 850°C minimum

**Optional Extras**

	De-ashing Tool	✓
	Pet & Horse Cremulator	✓
	Lift Table	✓
	Fuel Tank	✓
	Spares Kit & Servicing	✓

## Pet Cremation



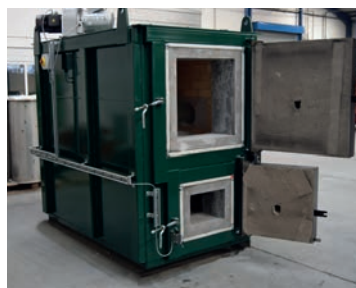
# A50-IC (1) Multi chambered pet cremation machine for small to large pets.

## Pet Loading and De-Ashing

The A50 series of cremators are ergonomically designed for easy and safe loading of household pets. Loading through the front facing door can be completed manually or with the aid of a hydraulic lifting table. Working on a rotating system of cremation. The upper chamber is loaded with the pet for cremation. Once nearing completion the ash and remnants are pulled into the lower finishing chamber. Enabling the upper chamber to be cleaned prior to the next animal being loaded. The ashes from the first animal are individually removed from the finishing chamber. This allows for a higher process rate than a traditional single chamber machine.

## The Addfield Difference

- Pre-Fabricated 8mm & 10mm robust mild steel casing, seam welded and suitably stiffened/braced where necessary.
- Hardwearing and resilient concrete insulation door, providing a tight seal, giving excellent thermal efficiency.
- Primary and secondary chamber lining thickness 180mm rated at 1650°C.
- Premium paint finish - Steel structures are painted using a two-pack high grade paint system.
- Unique Hot Hearth technology enabling increased efficiency of cremation by providing additional heating within the chamber encouraging 360° heat distribution.
- Multi-layered refractory lining using fire bricks and insulation bricks, improving thermal efficiency.



## Additional Operation Equipment



### Hydraulic Lift Table

Providing an easier way of lifting weights up to 150kg. Having an extended bed for safer loading. Height adjustable up to 1.3m, and a pull lever to smoothly lower the table.



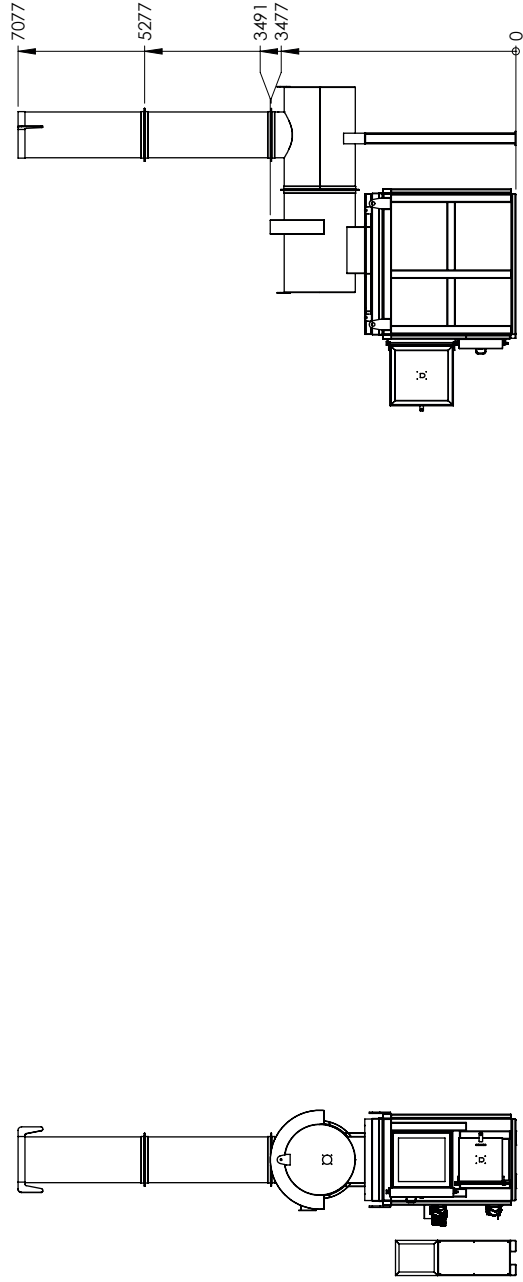
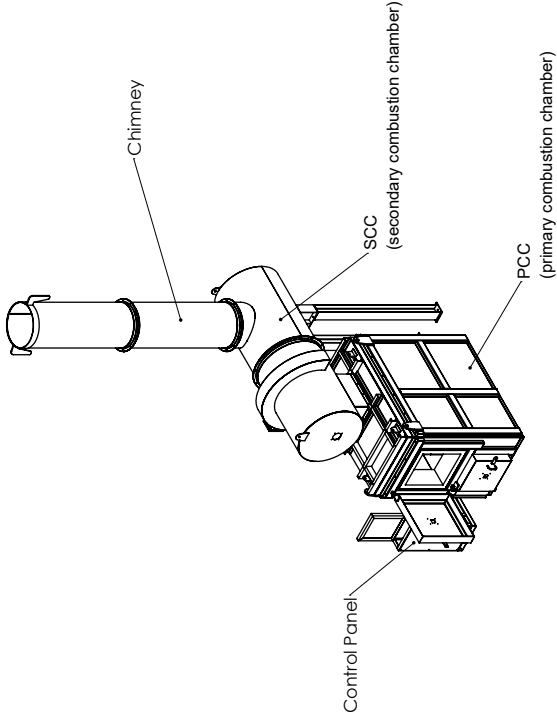
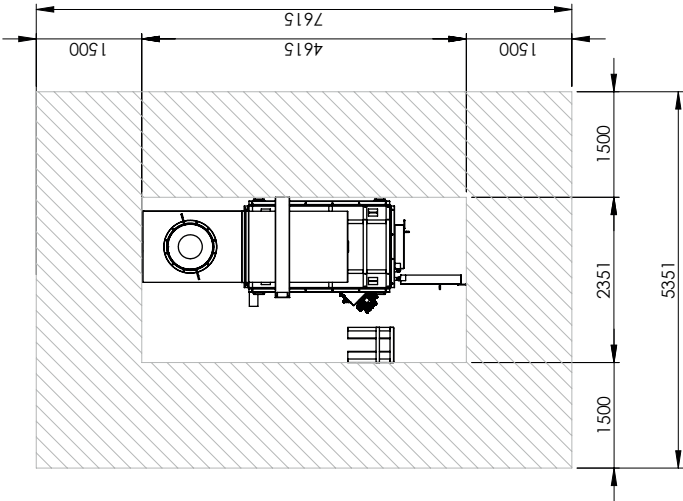
### Pneumatic Doors

Pneumatically powered vertical opening primary chamber doors are available for this cremator. This supports an ergonomic hands free operation and improved operational thermo dynamics.



### Pet Cremulator

The cremulator rapidly reduces all fragments after the cremation process. Grinding them into a fine, presentable ash. For a more visually appealing remains to return to the pet owners.



MATERIAL: N/A		FINISH: N/A	
WEIGHT: N/A		<b>THIRD ANGLE PROJECTION</b> (UNLESS STATED OTHERWISE)	
<b>TOLERANCES UNLESS OTHERWISE STATED</b>			
FABRICATION	MACHINING	ANGULAR	
± 1	± 0.05	up to 40° ± 0.05	
± 2	± 0.05	40° to 60° ± 0.05	
± 3	± 0.05	> 60° to 90° ± 0.05	
± 4	± 0.15	90° to 120° ± 0.15	
± 5	± 0.15	> 120° to 150° ± 0.15	
± 6	± 0.2	> 150° to 180° ± 0.2	
± 7	± 0.3	> 180° up to 4000 ± 0.3	
± 8	± 0.5	> 4000 up to 8000 ± 0.5	
± 9	± 0.5	> 8000 up to 12000 ± 0.5	
± 10	± 0.5	> 12000 up to 20000 ± 0.5	
± 11	± 0.5	> 20000 up to 100000 ± 0.5	
± 12	± 0.5	> 100000 up to 1000000 ± 0.5	
± 13	± 0.5	> 1000000 up to 10000000 ± 0.5	
± 14	± 0.5	> 10000000 up to 100000000 ± 0.5	
± 15	± 0.5	> 100000000 up to 1000000000 ± 0.5	
± 16	± 0.5	> 1000000000 up to 10000000000 ± 0.5	

**addfield**  
 Incinerate • Cremate

T: +44 (0)1543 571 280  
 E: sales@addfield.com  
 www.addfield.com

PROJECT: **A50-IC(1)**

TITLE: **GA**

DRAWING No.	45-001-5	REV	-
SHEET 1 OF 1	SCALE: 1:75	A3	

DATE	DRAWN	CHECKED	APPROVED	DATE	DRAWN	CHECKED	APPROVED	DATE	DRAWN	CHECKED	APPROVED
				20/04/2022	A SKIDMORE	-					
ISSUE FOR MANUFACTURE											
COMMENTS											
COMMENTS											
COMMENTS											
COMMENTS											

Addfield Environmental Systems LTD  
 Incinerate • Cremate  
 The copyright in this drawing is the property of Addfield Environmental Systems Ltd. It is not to be reproduced, stored in a retrieval system, or transmitted in any form or by any means, electronic, mechanical, photocopying, recording, or by any information storage and retrieval system, without the prior written permission of Addfield Environmental Systems Ltd.