

'The most thermally efficient, robust and reliable mobile incinerators on the market
Simply Built Better!'



AES100-2SEC 50kg Capacity Mobile Incinerator

The AES100-2SEC is our low capacity incinerator that runs at 850°C with a two second residual time, making it ideal animal and general waste incineration.

The smallest incinerator in our range, the AES100 has a 50kg weight capacity and a 0.1188m³ chamber volume. The machine is made from lightweight materials making it a more versatile machine that can be trailer mounted and used as mobile incineration unit. The AES100 machines are DEFRA and DARD approved to burn up to 50kg/hr.



AES 100-2SEC



Mobile



AI Controller



Refractory

t: +44(0)1543 571280 | f: +44(0)1543 571173
e: sales@addfield.com | www.addfield.com
Addfield Environmental Systems Limited
Unit 9 | Zone 4 | Burntwood Business Park | Staffordshire | WS7 3XD | UK

addfield
Incinerate • Cremate

© Addfield Environmental Systems Ltd
All information should be used as a guide only, specifications are subject to change without notice.

AES100-2SEC 50kg Capacity Mobile Incinerator

The mobile range is designed as a two stage incinerator unit comprising of a primary loading chamber and a secondary after burner chamber. This afterburner system draws the hot gases from the primary chamber, this ensures a clean (and compliant) burn at temperatures of 850°C.

The Addfield range of incinerators are CE Certified to BS EN 746-2 :1997, a recent emissions testing concluded the following results based on two second residue time within the secondary chamber, results are well below the EC limits.

Expected Emissions*	% by Volume
Carbon Dioxide (CO ₂)	7.4%
Water (H ₂ O)	22%
Oxygen (O ₂)	6%
Nitrogen (N ₂)	64.5%
Smoke (Not detectable under standard operating conditions)	0%
Odour (Not detectable under standard operating conditions)	0%
Volume of ash (Dependent on waste stream)	1-3%

*These emissions are based on minimum waste calorific values 45.7MJ/kg (animal carcase). With no other waste streams present other than general packaging containers that do not make up more than 1.5% of the total load weight.

Composition of fuel being used:

Fuel Input	Diesel	Composition %
Carbon	C	86%
Hydrogen	H ₁	13.2%
Nitrogen	N ₂	0.70%
Oxygen	O ₂	0.00%

Machine Specifications: AES100-2SEC

External Length (mm)	1370
External Width (mm)	660
External Height/Less Flue(mm)	3590/2590
Primary Chamber Sizes:	
Internal Length (mm)	600
Internal Width (mm)	450
Internal Height (mm)	440
Chamber Volume (m ³)	0.1188
Weight (Approx. Tonnes)	0.95
CE Certified	YES
EU Regulations Compliant	YES
Max Load Capacity (kg)	50
Nominal Burn Rate UK*(kg/hr)	< 50
Burn Rate [Export Only]*(kg/hr)	50-75
Thermal Capacity (kw/hr)	190
Power Supply 50/60hz	210/230v
Fuel Options:	
Diesel	Yes
LPG	Yes
N-Gas	Yes

† Based on general municipal waste streams

* Depending on the type waste stream being loaded and excludes heat up time.

We reserve the right to change the specification, dimensions and quality of materials from time to time, so long as the alteration is minor or an improvement to the said products.

Robust, Reliable...
...and Efficient

t: +44(0)1543 571280 | f: +44(0)1543 571173

e: sales@addfield.com | www.addfield.com

Addfield Environmental Systems Limited

Unit 9 | Zone 4 | Burntwood Business Park | Staffordshire | WS7 3XD | UK

addfield
Incinerate • Cremate

AES100-2SEC 50kg Capacity Mobile Incinerator



General Construction

- Pre-fabricated 3 & 5mm robust mild steel casing suitably stiffened and braced where necessary so as to be self-supporting throughout.
- Paint finishing - The steel structures are painted using a high temperature paint system that is baked onto the steel structure at 70°C for 10hrs. Standard colours of the AES100-2SEC is matt black main body, door and upper cover plates.
- Primary and secondary chamber rated at 1260°C.
- Lightweight resilient refractory fibre insulation lid, providing a tight seal and gives excellent thermal efficiency.
- Stainless steel removable flue.
- All combustion fuel pipe work and electrical systems are weather proof and in accordance with BS7671-17.

Ultra Portable Trailer Mountable Incineration

Primary Chamber

- Fully insulated internal lining with a total thickness of 100mm. 75mm refractory lining and 25mm cast lining coated in protective zirconia paint.
- One manually operated, access lid.
- One waste ignition burner, temperature controlled on-off, complete with internal air fans.

Secondary Chamber

- Fully insulated internal refractory lining, constructed from 80mm high grade low thermal mass insulation.
- One secondary chamber burnout burner, temperature controlled on-off, complete with internal air fans.
- Integrated combustion burner air fans with automatically controlled distribution to their designated area.
- One temperature sensor mounting point at the top of the chamber ensuring the chamber reaches the necessary 850°C minimum.

AES100-2SEC 50kg Capacity Mobile Incinerator



Addfield Intelligent Controller

Key Features:

- Plug and play design for easy & efficient replacement.
- Zone ramp sequence three zone controller
- Incoming and outgoing cable terminations
- Burner control gear
- Interface relays and contactors
- Temperature indication and control of the primary chamber
- Temperature indication and control of the secondary chamber
- Plant status indicators
- Cycle status indicators
- Fault status indicators
- Operator interface.



Waste Loading and De-Ashing

The AES100-2SEC series of incinerators are designed for top loading only through the main access lid.

At the end of every incineration process it is recommended the ash should be removed prior to the next incineration cycle.

Waste types to be used in the Addfield AES100-2SEC Incinerator

- Fish
- Chickens
- Butchers waste
- Pet cremation
- General waste

Combustion System

The burner system comprises of fully automatic package burners, these burners come complete with the following features:

- Flame failure controls
- Adjustable flame patterns
- Integral fuel pump
- Solenoid valves
- Integral continuous air fan
- Fuel sensors

t: +44(0)1543 571280 | f: +44(0)1543 571173

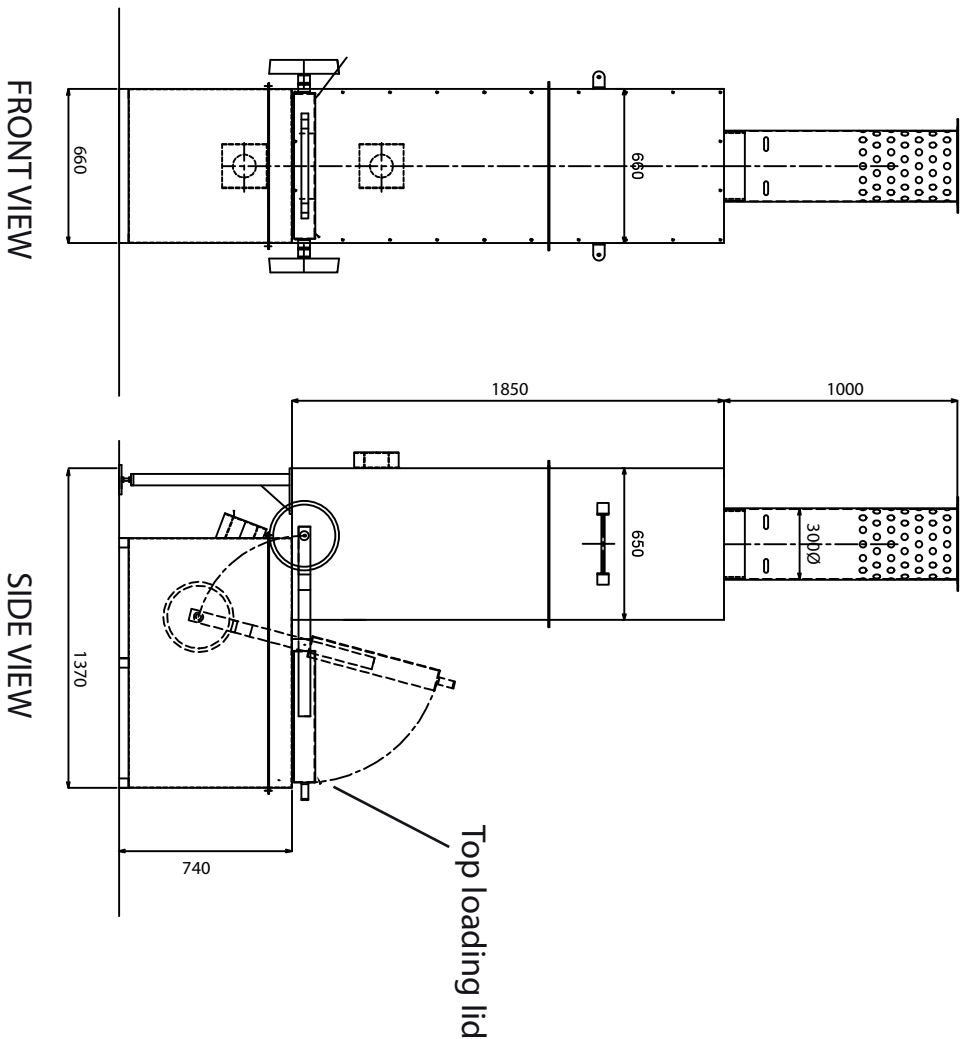
e: sales@addfield.com | www.addfield.com

Addfield Environmental Systems Limited

Unit 9 | Zone 4 | Burntwood Business Park | Staffordshire | WS7 3XD | UK

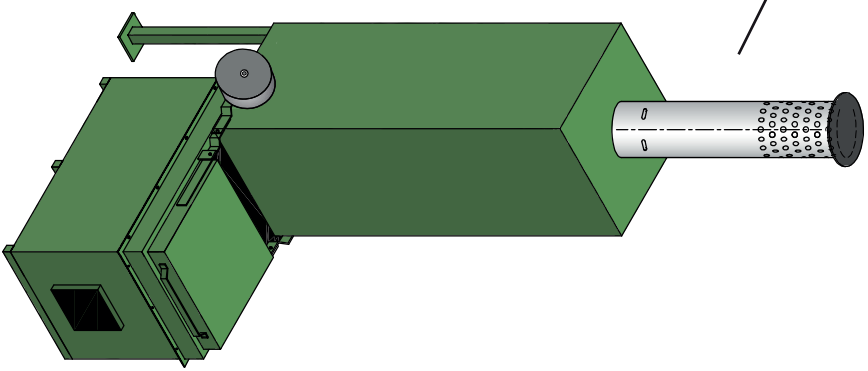
addfield
Incinerate • Cremate

AES100-2SEC Incinerator



Chimney Sections
*Can be made longer

ISOMETRIC VIEW



All information should be used as a guide only, specifications are subject to change without notice.

rev.	description	date
	addfield	
	Addfield Environmental Systems Ltd Unit 9, Zone 4, Burntwood Business Park, Staffordshire, WS7 3XD www.addfield.com	
Title GENERAL ARRANGEMENT OF AES100-2SEC INCINERATOR		
scale: Not to scale		
drawn:-	RLC	date:-
diag. no.:	AES100-2SEC	rev.